

Quality Report

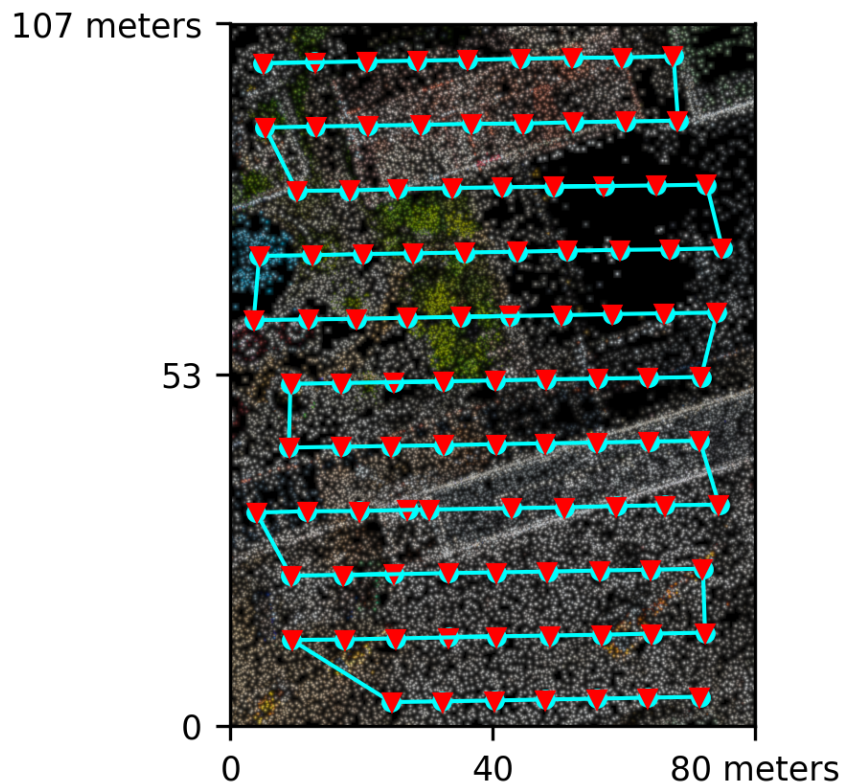
Processed with ODX version 3.7.4

Dataset Summary

| | |
|-----------------|--------------------------|
| Date | 21/05/2026 at 06:11:07 |
| Area Covered | 0.007049 km ² |
| Processing Time | 46.0m:21.0s |
| Capture Start | 20/05/2026 at 12:01:49 |
| Capture End | 20/05/2026 at 12:10:09 |

Processing Summary

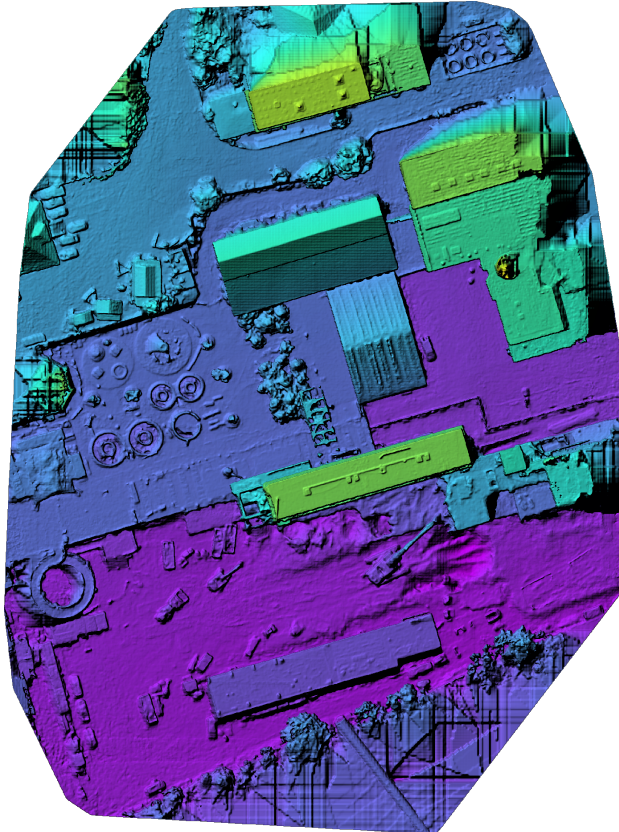
| | |
|--|-----------------------------------|
| Reconstructed Images | 100 over 100 shots (100.0%) |
| Reconstructed Points (Sparse) | 140777 over 142512 points (98.8%) |
| Reconstructed Points (Dense) | 46,222,972 points |
| Average Ground Sampling Distance (GSD) | 3.3 cm |
| Detected Features | 16,000 features |
| Reconstructed Features | 9,897 features |
| Geographic Reference | GPS |
| GPS errors | 0.18 meters |



Previews



Orthophoto

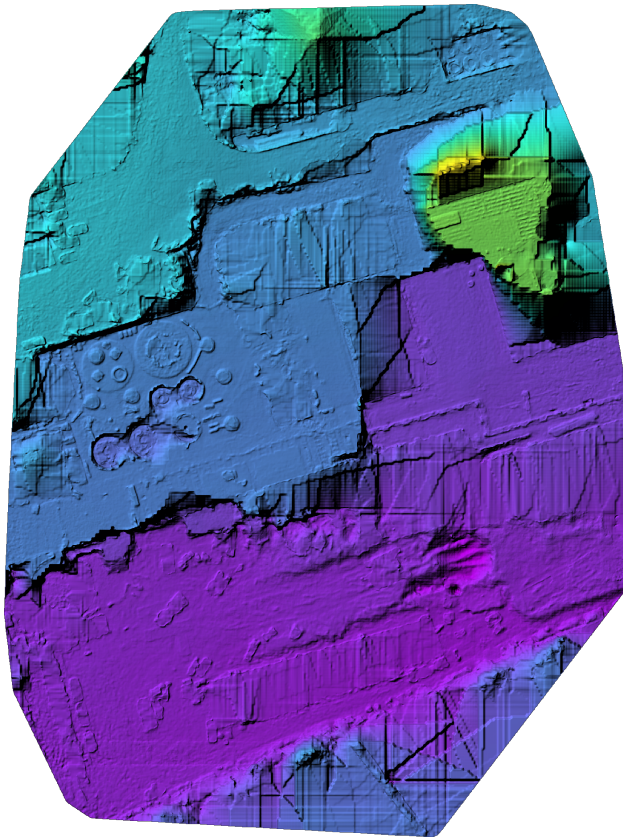


Digital Surface Model



476.67m

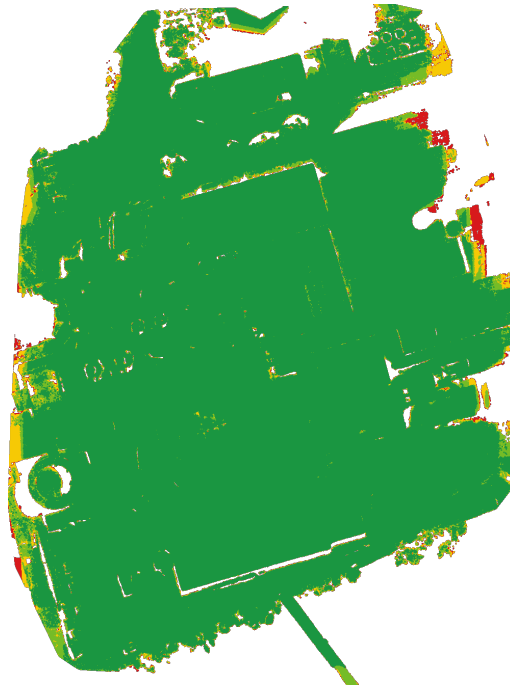
529.55m



Digital Terrain Model



Survey Data



■ 2 ■ 3 ■ 4 ■ 5+

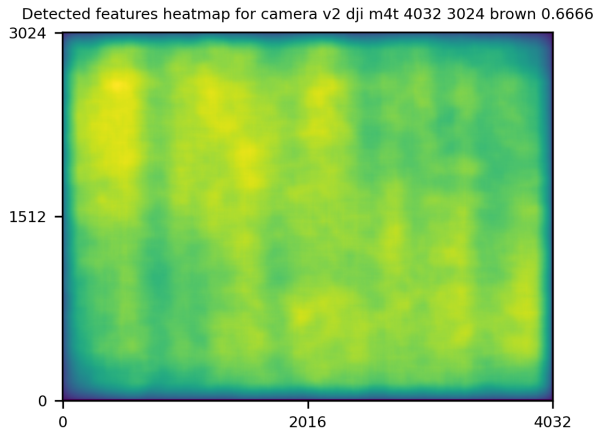
GPS/GCP/3D Details

| GPS | Mean | Standard Deviation | RMS Error |
|------------------|--------|--------------------|-----------|
| X Error (meters) | -0.000 | 0.059 | 0.059 |
| Y Error (meters) | 0.000 | 0.040 | 0.040 |
| Z Error (meters) | 0.000 | 0.196 | 0.196 |
| Total | | | 0.177 |

| 3D | Mean | Standard Deviation | RMS Error |
|------------------|-------|--------------------|-----------|
| X Error (meters) | 0.061 | 0.118 | 0.132 |
| Y Error (meters) | 0.072 | 0.145 | 0.162 |
| Z Error (meters) | 0.193 | 0.377 | 0.424 |
| Total | | | 0.231 |

| | Absolute | Relative |
|-----------------------------------|----------|----------|
| Horizontal Accuracy CE90 (meters) | 0.100 | 0.234 |
| Vertical Accuracy LE90 (meters) | 0.308 | 0.411 |

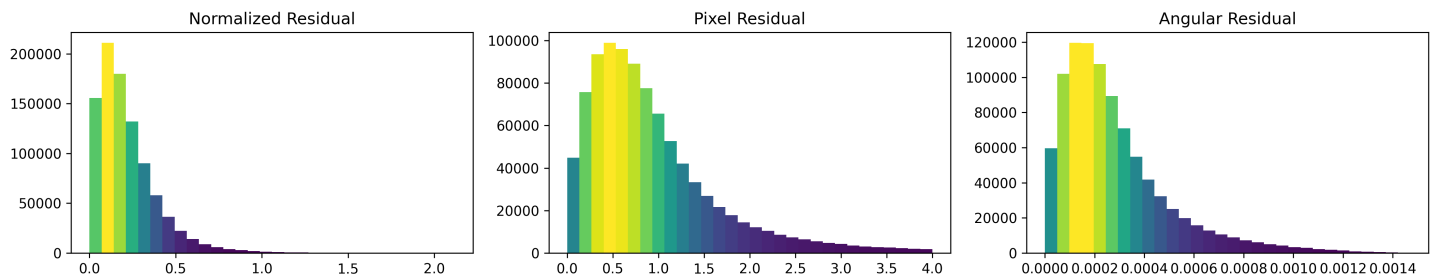
Features Details



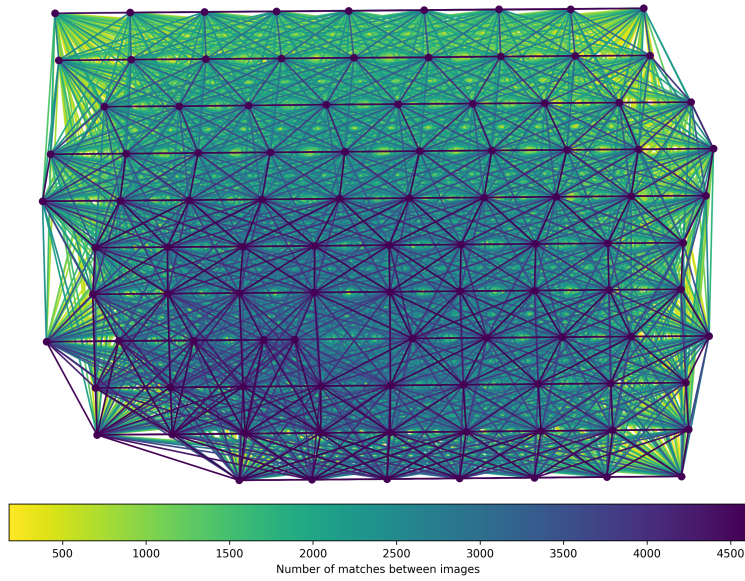
| | Min. | Max. | Mean | Median |
|---------------|-------|-------|-------|--------|
| Detected | 16000 | 16000 | 16000 | 16000 |
| Reconstructed | 5901 | 11005 | 9599 | 9897 |

Reconstruction Details

| | |
|--|-----------------------|
| Average Reprojection Error (normalized / pixels / angular) | 0.22 / 0.92 / 0.00028 |
| Average Track Length | 6.82 images |
| Average Track Length (> 2) | 9.96 images |



Tracks Details



| | | | | | | | | | |
|--------|-------|-------|-------|------|------|------|------|------|------|
| Length | 2 | 3 | 4 | 5 | 6 | 7 | 8 | 9 | 10 |
| Count | 55568 | 22319 | 12556 | 8208 | 5740 | 4526 | 3611 | 2880 | 2532 |

Camera Models Details

v2 dji m4t 4032 3024 brown 0.6666

| | k1 | k2 | k3 | p1 | p2 | focal | aspect | cx | cy |
|-----------|--------|---------|--------|--------|---------|--------|--------|---------|---------|
| Initial | 0.0000 | 0.0000 | 0.0000 | 0.0000 | 0.0000 | 0.6667 | 1.0000 | 0.0000 | 0.0000 |
| Optimized | 0.0929 | -0.1452 | 0.0911 | 0.0003 | -0.0003 | 0.6707 | 1.0000 | -0.0005 | -0.0005 |

